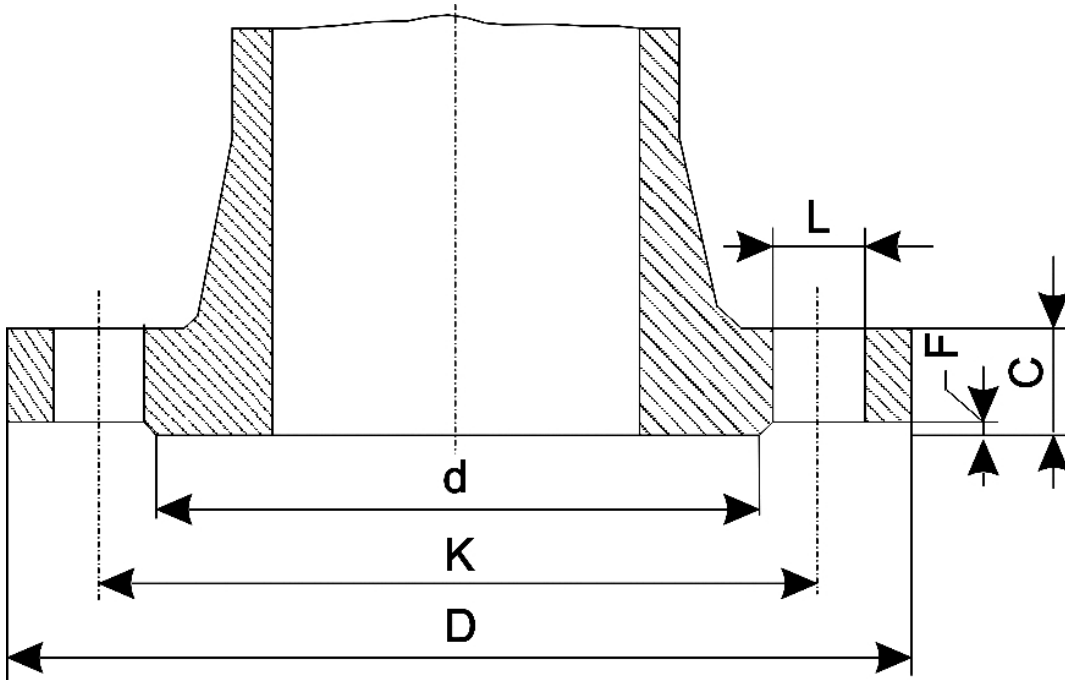


There are no translations available.

Dimensions of the steel Flanges DN 50 - 2"



n° - number of holes
 dia - diameter of bolts

Flange standard	PN			
Rating	D	K	L	n°

UNI 2223				
DIN 2501				
BS 4504				
NF E 29-203*				
ISO/DIS 7005-1.2*	2,5-6	140	110	

Dimensions of the steel Flanges DN50-2"

10	165	125	18
16	165	125	18
25	165	125	18
40	165	125	18
64	180	135	22
3 100	195	145	26

3			
ISO/DIS 7005-1.2			
NF E 29-203	20	152	120,5
50	165	127,0	
18	8	M16	22,5
100	165	127,0	18
ANSI B 16.5			
BS 1560	150	6,00	
(152,4)	4,75		
(120,6)	0,75		
(19,0)	4	0,62	
(15,9)	0,75		
(19,0)	3,62		
(92,1)	0,06		
(1,6)			
300	6,50		
(165,1)	5,00		
(127,0)			
0,75			
(19,0)	8	0,62	
(15,9)	0,88		
(22,2)	3,62		
(92,1)	0,06		
(1,6)			
400	6,50		
(165,1)	5,00		
(127,0)	0,75		
(19,0)	8	0,62	
(15,9)	1,00		
(25,4)	3,62		

Dimensions of the steel Flanges DN50-2"

(92,1)	0,25**	
(6,4)		
600	6,50	
(165,1)	5,00	
(127,0)	0,75	
(19,0)	8	0,62
(15,9)	1,00	
(25,4)	3,62	
(92,1)	0,25**	
(6,4)		
900	8,50	
(215,9)	6,50	
(165,1)	1,00	
(25,4)	8	0,88
(22,2)	1,50	
(38,1)	3,62	
(92,1)	0,25**	
(6,4)		
BS 10		
AS 2129	A	6
(152,4)	4 $\frac{1}{2}$	
(114,3)	11/16	
(17,5)	4	$\frac{5}{8}$
(15,9)	5/16	
(7,9)	—	—
D	6	
(152,4)	4 $\frac{1}{2}$	
(114,3)	11/16	
(17,5)	4	$\frac{5}{8}$
(15,9)	9/16	
(14,3)	—	—
E	6	
(152,4)	4 $\frac{1}{2}$	
(114,3)	11/16	
(17,5)	4	$\frac{5}{8}$
(15,9)	9/16	
(14,3)	—	—
F	6 $\frac{1}{2}$	
(165,1)		
5		
(127,0)	11/16	
(17,5)	4	$\frac{5}{8}$
(15,9)	$\frac{5}{8}$	
(15,9)	—	—
H	6 $\frac{1}{2}$	
(165,1)	5	

Dimensions of the steel Flanges DN50-2"

(127,0)	11/16	
(17,5)	4	5/8
(15,9)	3/4	
(19,0)	4	
(101,6)	1/16	
(1.6)		
J	6 1/2	
(165,1)	5	
(127,0)	7/8	
(22,2)	4	3/4
(19,0)		
1		
(25,4)	4	
(101,6)	1/16	
(1.6)		

Note - The dimensions of ANSI - BS -AS flanges are in inch; the others are in mm (the ones in brackets included which are derived from the dimensions in inch)* For ratings 2,5-6-10-16-25-40 only** To be added to the thickness C of the flange