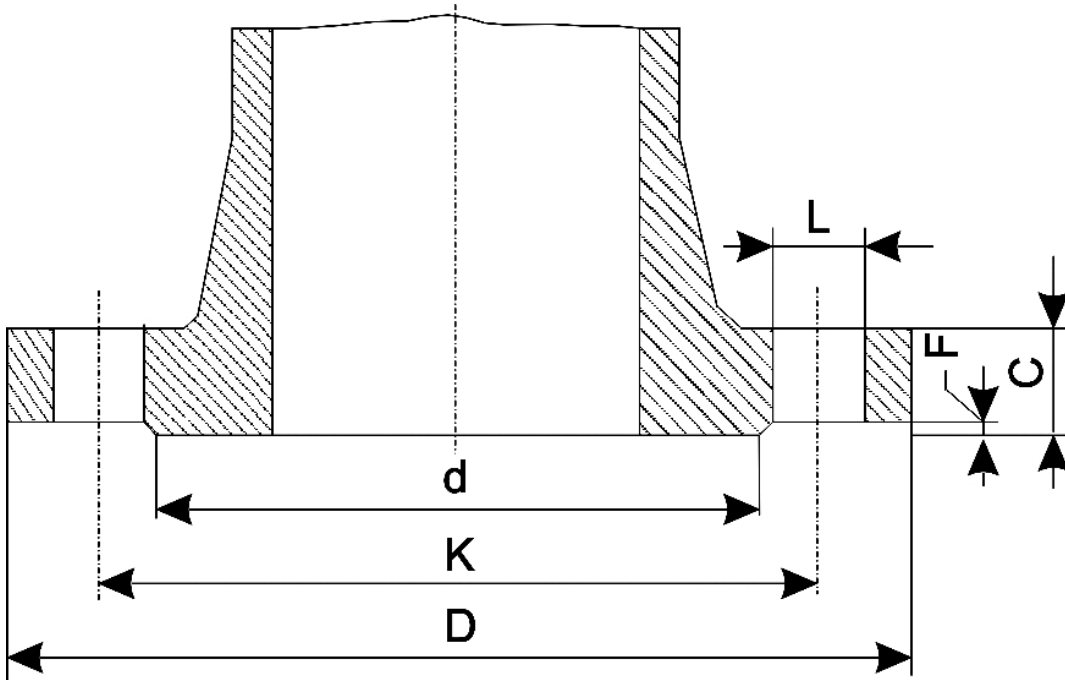


There are no translations available.

Dimensions of the steel Flanges DN 350 - 14"



n° - number of holes
 dia - diameter of bolts

Flange standard	PN	D	K	L	n°
Rating					

UNI 2223					
DIN 2501					
BS 4504					
NF E 29-203*					
ISO/DIS 7005-1.2*	2,5-6		490		445

Dimensions of the steel Flanges DN350-14"

10	505	460	22
16	520	470	26
25	555	490	33
40	580	510	36
64	600	525	39
4 100	655	560	48

4

ISO/DIS 7005-1.2
NF E 29-203

20

535

476,0

50
32,5

585
20

514,5
M30

54

100

605

527,0

39,0

ANSI B 16.5
BS 1560

(533,4)
(476,2)
(28,6)
(25,4)
(34,9)
(412,8)
(1,6)

150
18,75
1,12
12
1,38
16,25
0,06

21,00

1,00

300
(584,2)
(514,4)
1,25
(31,7)
(28,6)
(54,0)
(412,8)
(1,6)

23,00
20,25

20
2,12
16,25
0,06

1,12

400
(584,2)
(514,4)
(34,9)
(31,7)

23,00
20,25
1,38
20
2,38

1,25

Dimensions of the steel Flanges DN350-14"

(60,3)	16,25	
(412,8)	0,25**	
(6,4)		
600	23,75	
(603,2)	20,75	
(527,0)	1,50	
(38,1)	20	1,38
(34,9)	2,75	
(69,8)	16,25	
(412,8)	0,25**	
(6,4)		
900	25,25	
(641,3)	22,00	
(558,8)	1,62	
(41,3)	20	1,50
(38,1)	3,38	
(85,7)		
16,25		
(412,8)	0,25**	
(6,4)		
BS 10		
AS 2129	A	20 ³ / ₄
(527,0)	18 ¹ / ₈	
(469,9)	1	
(25,4)	8	7 ⁷ / ₈
(22,2)	7 ⁷ / ₈	
(22,2)	—	—
D	20 ³ / ₄	
(527,0)	18 ¹ / ₈	
(469,9)	1	
(25,4)	12	7 ⁷ / ₈
(22,2)	1	
(25,4)	—	—
E	20 ³ / ₄	
(527,0)	18 ¹ / ₈	
(469,9)	1	
(25,4)	12	7 ⁷ / ₈
(22,2)	1	
(25,4)	—	—
F	21 ³ / ₄	
(552,5)		
19 ¹ / ₈		
(495,3)	1 ¹ / ₈	
(28,6)	16	1
(25,4)	1 ¹ / ₄	
(31,8)	—	—

Dimensions of the steel Flanges DN350-14"

H	21 ³ / ₄	
(552,5)	19 ¹ / ₈	
(495,3)	1 ¹ / ₈	
(28,6)	16	1
(25,4)	1 ⁵ / ₈	
(41,3)	16 ¹ / ₂	
(419,1)	1/16	
(1.6)		
J	21 ³ / ₄	
(552,5)	19 ¹ / ₈	
(495,3)	1 ¹ / ₄	
(31,8)	16	1 ¹ / ₂
(38,1)	2 ¹ / ₈	
(54,0)		
16 ¹ / ₂		
(419,1)	1/16	
(1.6)		

Note - The dimensions of ANSI - BS -AS flanges are in inch; the others are in mm (the ones in brackets included which are derived from the dimensions in inch)* For ratings 2,5-6-10-16-25-40 only** To be added to the thickness C of the flange